

EXPERIENCE IT YOURSELF.



ILLINOIS HIGH-SPEED RAIL

CHICAGO TO ST. LOUIS

Chicago — St. Louis High-Speed Rail

Local Officials' Briefing Lincoln to Auburn Construction

July 22, 2014

Chicago-St. Louis Corridor Benefits

EXPERIENCE IT YOURSELF.



- » **Reduction in travel time by about an hour**
- » **Enhanced reliability**
- » **New passenger cars and locomotives**
- » **New/rehabilitated stations**
- » **Safety improvements**



**ILLINOIS
HIGH-SPEED RAIL**
CHICAGO TO ST. LOUIS



www.idothsr.org

High-Speed Service

EXPERIENCE IT YOURSELF.

- » **Higher Speed service between Dwight and Pontiac in operation since 2012**
- » **Service up to 110 miles per hour between Joliet and Carlinville by the end of 2015**
- » **High-Speed service from Joliet to East St. Louis by end of 2017**



**ILLINOIS
HIGH-SPEED RAIL**
CHICAGO TO ST. LOUIS



www.idothsr.org

High-Speed Rail Program Schedule

EXPERIENCE IT YOURSELF.

2010-2012

- Track reconstruction and upgrades

2012

- Procurement process for new high-speed rail cars
- Operation of trains up to 110 mph between Dwight and Pontiac

2013

- Procurement process for new high-speed rail locomotives

2015

- Significant infrastructure improvements in place to support speeds of up to 110 mph on the Joliet-Carlinville portion of the corridor
- Initial reductions in travel time

2015-2017

- Infrastructure improvements complete with increased speeds over entire Joliet-East St. Louis segment
- Travel time reduced by about an hour
- Springfield Third St. improvements
- Delivery of the new cars and new locomotives



**ILLINOIS
HIGH-SPEED RAIL**
CHICAGO TO ST. LOUIS



www.idothsr.org

Current Program Budget: \$1.53 Billion

EXPERIENCE IT YOURSELF.

> Track & Structures	\$681 Million
> Real Estate	\$24 Million
> Stations	\$33 Million
> Rolling Stock / Equipment	\$211 Million
> Signaling & Communications	\$202 Million
> Miscellaneous <i>(Grade Crossing Approaches, Overhead Bridges, Fencing, etc)</i>	\$176 Million
> Professional Services <i>(Program Management, Environmental/Design, Construction Oversight)</i>	\$203 Million

Note: This summary does not include Tier 1 and Tier 2 EIS's, Joliet Multimodal, or other individual projects.



**ILLINOIS
HIGH-SPEED RAIL**
CHICAGO TO ST. LOUIS



www.idothsr.org

Station Improvements

EXPERIENCE IT YOURSELF



- » **New or renovated facilities**
- » **Increased passenger safety, comfort and convenience**
- » **Lighting, site and parking improvements**
- » **New ADA compliant boarding platforms**



**ILLINOIS
HIGH-SPEED RAIL**
CHICAGO TO ST. LOUIS



www.idothsr.org

Station Improvements

EXPERIENCE IT YOURSELF.

» Lincoln

- Upgrades to historical building
- Plans in the conceptual design phase
- Environmental documentation complete



» Springfield

- ADA upgrades planned for existing facility
- Plans for upgrades in the design phase

Station improvements generate additional ridership and commercial development activity.

EXPERIENCE IT YOURSELF.



Upcoming Construction



**ILLINOIS
HIGH-SPEED
RAIL**

CHICAGO TO ST. LOUIS



Illinois Department
of Transportation

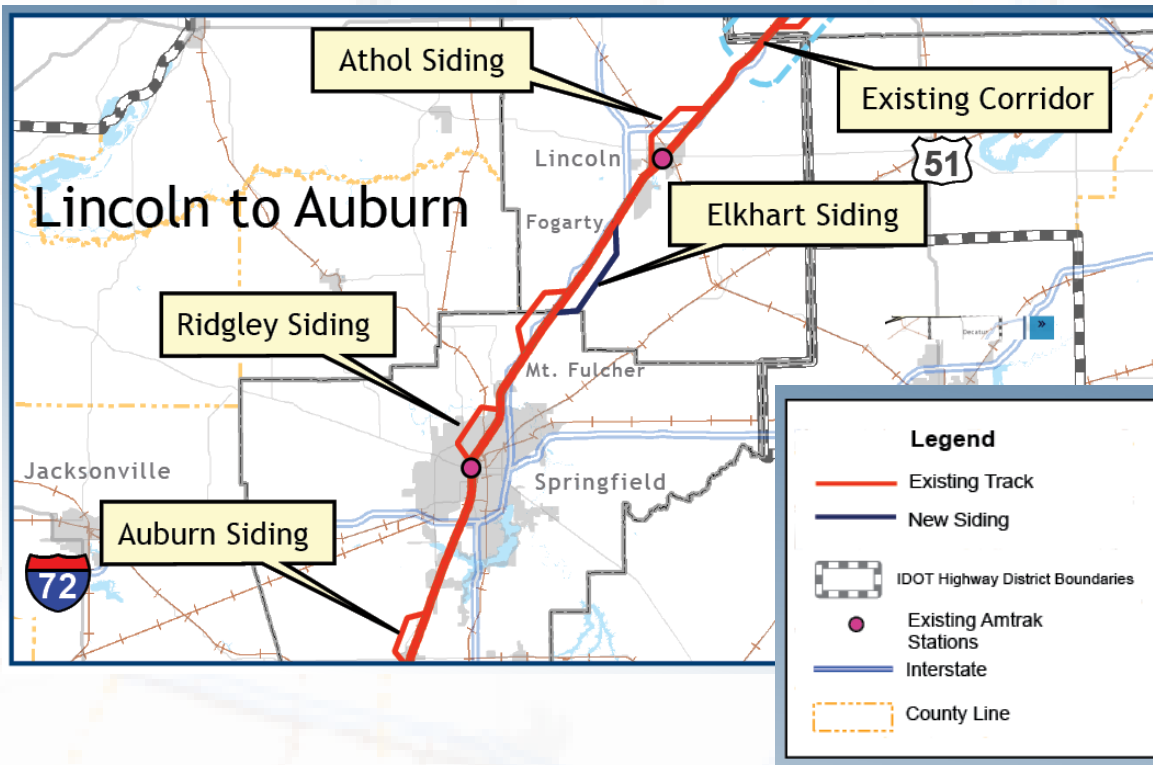
www.idothsr.org

Lincoln to Auburn: Construction

EXPERIENCE IT YOURSELF.

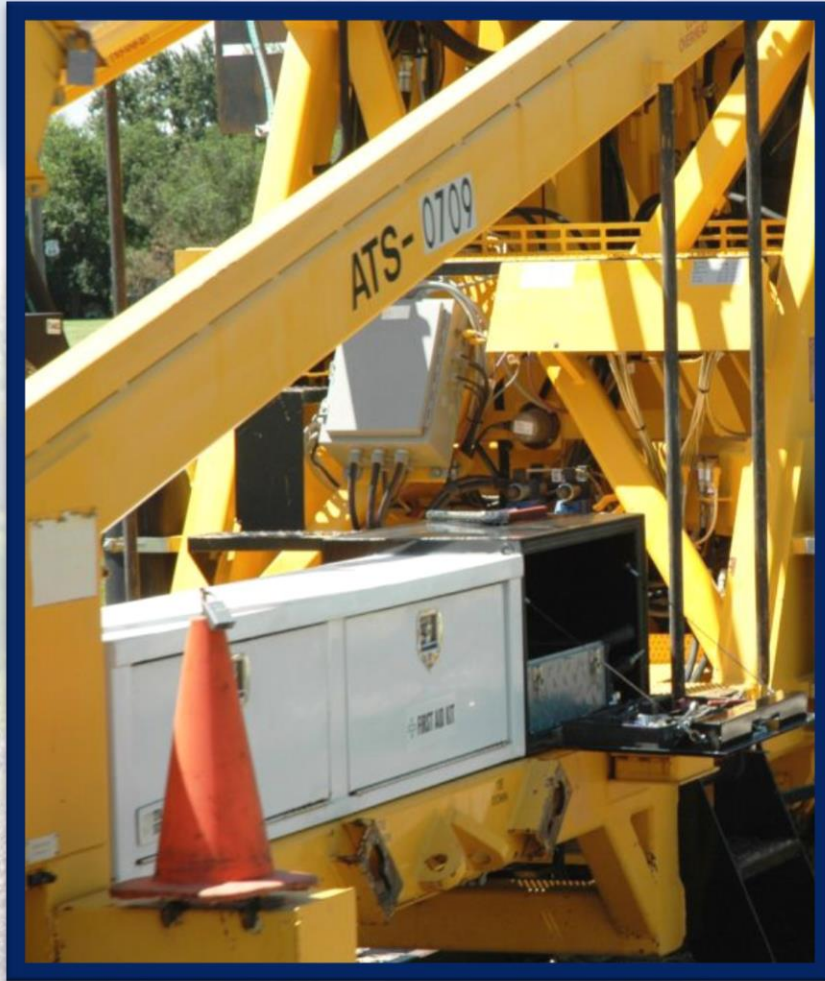


- » **At-grade crossing enhancements**
- » **Signal updates**
- » **New turnouts**
- » **Siding – new & reconstruction**
 - **Athol**
 - **Elkhart**
 - **Ridgley**
 - **Auburn**



2014 Construction: Overall Program

EXPERIENCE IT YOURSELF.



- **Crossing and approach improvements**
- **New sidings and second track**
- **Upgrades to bridges and culverts**
- **Drainage improvements**
- **Installation and upgrades to signal and wayside equipment**
- **Installation of fencing**



**ILLINOIS
HIGH-SPEED RAIL**
CHICAGO TO ST. LOUIS



Illinois Department
of Transportation

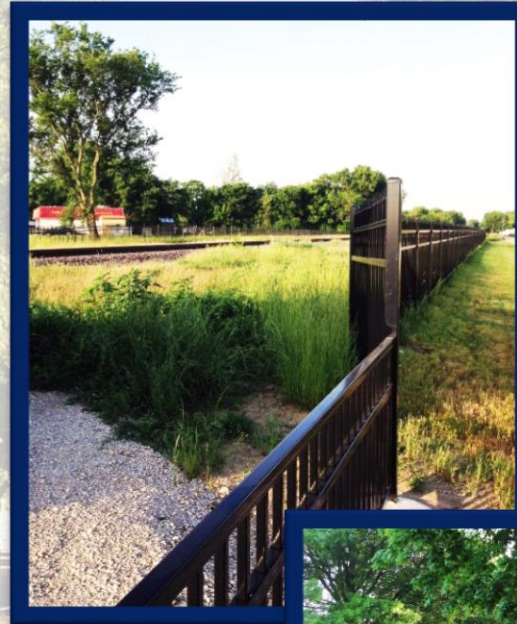
www.idothsr.org

Right-of-Way and Pedestrian Fencing

EXPERIENCE IT YOURSELF.

» **Fencing typically will be placed within one-foot of the Union Pacific Railroad right-of-way:**

- *In urban areas*
- *In select rural areas*



Grade Crossing Improvements

EXPERIENCE IT YOURSELF.



- » **New signal systems – Positive Train Control**
- » **Crossing safety devices**
- » **New signage and pavement markings**
- » **ADA accessibility directive signage**
- » **Pedestrian crossings at existing sidewalks and future locations with ICC petition**



**ILLINOIS
HIGH-SPEED RAIL**
CHICAGO TO ST. LOUIS



www.idothsr.org

Springfield Rail and IDOT Commitments

EXPERIENCE IT YOURSELF.

» 3rd Street Improvements

- Funded by 2010 American Recovery and Reinvestment Act (ARRA) grant
- Part of current program to upgrade corridor to safely operate passenger trains at speeds up to 110 mph

» Springfield Flyover

- Environmental study currently underway

» 10th Street – Rail Consolidation Plan

- Work will be conducted in phases
- Carpenter Street – 1st Project



Springfield Funding

EXPERIENCE IT YOURSELF.

» 3rd Street - \$25-30 million

- Largely American Recovery and Reinvestment Act (ARRA)
- Contributions from HSR Program Partners

» Springfield Flyover

- IDOT - \$1.6 million for environmental document

» 10th Street - \$315 million*

- IDOT - \$8.65 million for design work from Illinois Jobs Now!
- TIGER Grant for Carpenter Street
- Potential for funding from a variety of sources

*Based on 2011 dollars.



ILLINOIS
HIGH-SPEED RAIL
CHICAGO TO ST. LOUIS

Springfield – 3rd Street

EXPERIENCE IT YOURSELF.

» **Improvements focus on safety to adhere to same high standards used throughout the Corridor**

- *New grade crossings/safety devices*
- *Fencing*
- *Pedestrian safety devices at existing sidewalks and future locations with ICC petitions*
- *Bridge upgrades*



**ILLINOIS
HIGH-SPEED RAIL**
CHICAGO TO ST. LOUIS

Springfield – 3rd Street



- » **Provides improvements to be eligible for a quiet zone**
- » **Will allow for an increase in speeds from a maximum of 25 mph to 40 mph**
- » **Design and coordination is underway; anticipate construction to begin in 2015**
- » **Fall 2014 Public Hearing**

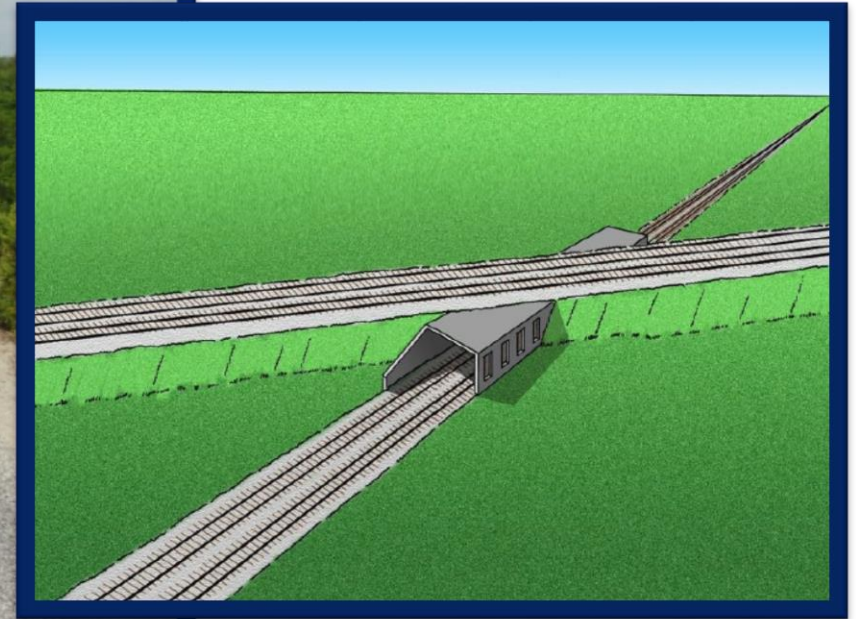


**ILLINOIS
HIGH-SPEED RAIL**
CHICAGO TO ST. LOUIS

Springfield Flyover

EXPERIENCE IT YOURSELF.

- » **Environmental Assessment (EA) underway**
- » **First Public Meeting this fall**



**ILLINOIS
HIGH-SPEED RAIL**
CHICAGO TO ST. LOUIS



www.idothsr.org

Springfield – 10th Street

EXPERIENCE IT YOURSELF.

- » **Tier 2 NEPA complete:
selected as Preferred
Alternative in 2012**
- » **City of Springfield is leading
10th Street Work**
 - **Design underway**
 - **Construction funding
identified for Carpenter
Street Underpass**

*When fully funded,
work will include:*

- Consolidation of all rail freight and passenger traffic
- Construction of new grade separations
- New passenger rail station

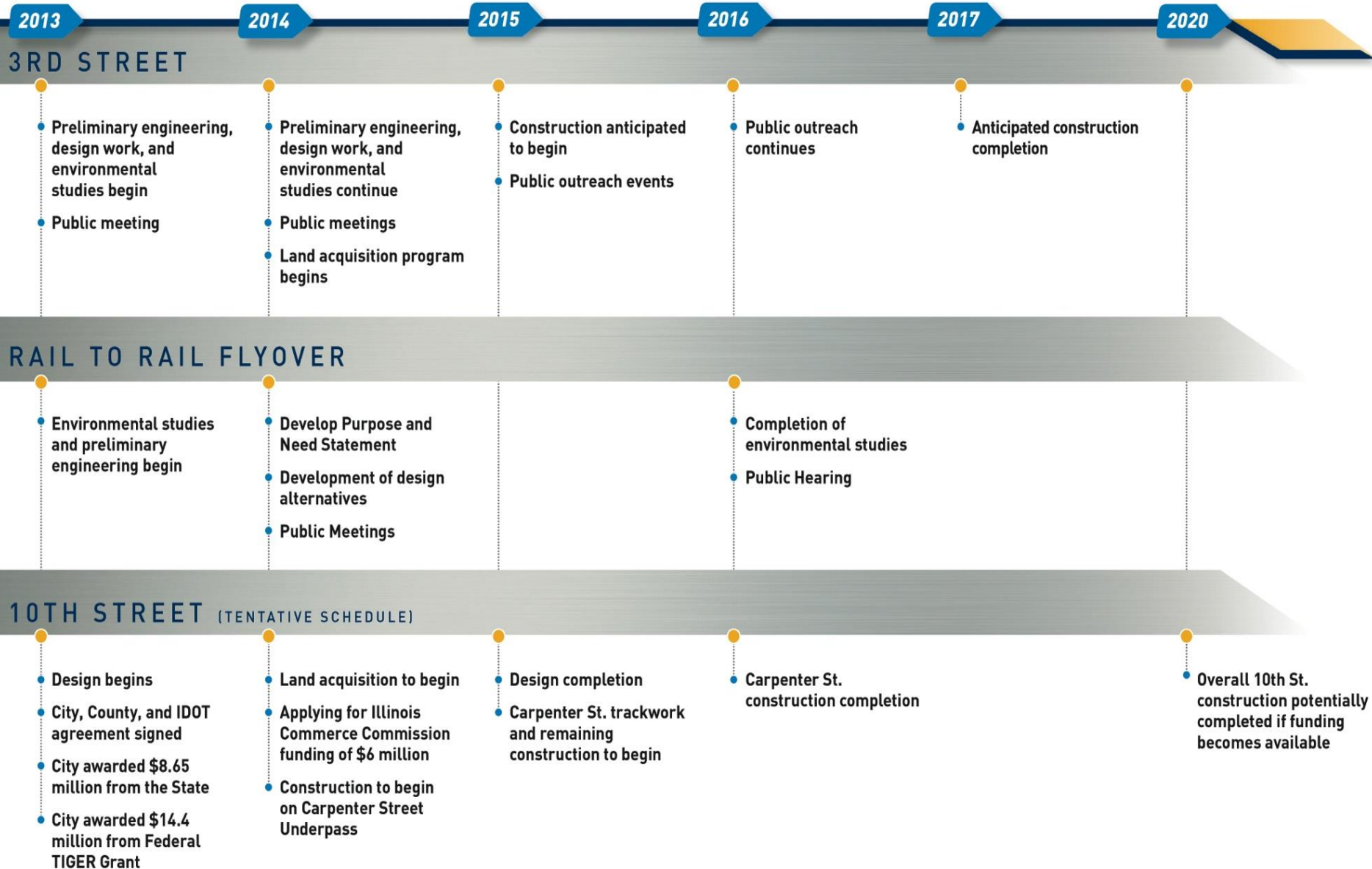


**ILLINOIS
HIGH-SPEED RAIL**
CHICAGO TO ST. LOUIS



www.idothsr.org

Springfield Projects – Overall Timeline



EXPERIENCE IT YOURSELF.



Program Milestones



**ILLINOIS
HIGH-SPEED
RAIL**

CHICAGO TO ST. LOUIS



www.idothsr.org

Construction Accomplishments

EXPERIENCE IT YOURSELF.

- **Installation of over 243 track-miles of new rail**
- **Interim construction of 225 crossing surfaces and approaches**
- **Completed construction of more than 40 grade crossings**
- **Installed four quadrant gate systems within 120 miles of the corridor**
- **Fencing installed**



Public Involvement Accomplishments

EXPERIENCE IT YOURSELF.



27 Public Meetings/Hearings

19 Railroad Safety Presentations

81 Community Events/Civic Presentations



**ILLINOIS
HIGH-SPEED RAIL**
CHICAGO TO ST. LOUIS



www.idothsr.org

EXPERIENCE IT YOURSELF.



Equipment



**ILLINOIS
HIGH-SPEED
RAIL**

CHICAGO TO ST. LOUIS



Illinois Department
of Transportation

www.idothsr.org

Equipment Procurement

EXPERIENCE IT YOURSELF.



> New high horsepower diesel locomotives

< Six new sets of equipment for Chicago to St. Louis corridor



ILLINOIS
HIGH-SPEED RAIL
CHICAGO TO ST. LOUIS

EXPERIENCE IT YOURSELF.



Next Steps



**ILLINOIS
HIGH-SPEED
RAIL**

CHICAGO TO ST. LOUIS



www.idothsr.org

Next Steps

EXPERIENCE IT YOURSELF.



- » **Environmental studies continue through 2015**
- » **Construction continues between Joliet and East St. Louis through 2017**
- » **Land acquisition will proceed following the Uniform Relocation Act**



**ILLINOIS
HIGH-SPEED RAIL**
CHICAGO TO ST. LOUIS



www.idothsr.org

EXPERIENCE IT YOURSELF.



Safety Information



**ILLINOIS
HIGH-SPEED
RAIL**

CHICAGO TO ST. LOUIS



Illinois Department
of Transportation

www.idothsr.org

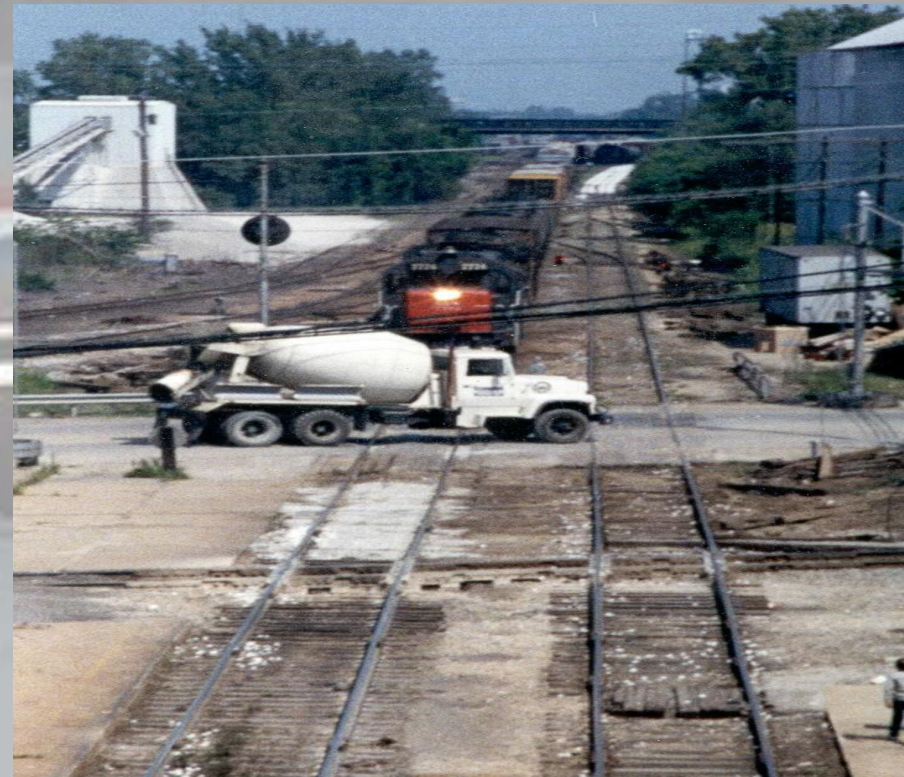
Public Safety in High Speed Rail Corridors

CHICAGO-ST. LOUIS HSR CORRIDOR



**Michael E. Stead
Rail Safety Section
Illinois Commerce Commission**

Public Safety IS the #1 Priority



Public Safety in High-Speed Rail Corridors

➤ *Train Speeds will Increase*

- ✓ Current Max. Train Speed = 79 mph
- ✓ **Proposed Max. Train Speed = 110 mph**

➤ *Crossing Warning Times will Increase*

- ✓ Current warning times for max. speed trains = 35 sec.
- ✓ **Warning times for max. speed trains: 80 seconds min.**

➤ *Train Volumes Projected To Increase*

- ✓ **Freight**

➔ ***More Trains = Greater Exposure***

Longer Warning Times... NOT Longer Delays



Public Safety in High Speed Rail Corridors

Considerations

- Public Crossings
- Pedestrian Crossings
- Trespassers
- Private Crossings
- Field Crossings



Public Safety in High Speed Rail Corridors

Proposed Safety Improvements

- Four Quadrant Roadway Gates
- Pedestrian Gates
- Right-of-Way Fencing
- Automatic Gates - Private Xings
- Automatic Warning Devices - Field Xings

Four Quadrant Gates (Public Crossings & Private Crossings)



Pedestrian Crossings



Pedestrian Crossings (Safe Access)

**Pedestrian Xing with
R.O.W. Access**



**Pedestrian Xing with
Restricted R.O.W. Access**



Trespassers (Restrict Access to RR R.O.W.)



Trespassers

It is illegal for any person to walk across or along railroad tracks at any place other than an authorized crossing.



RailPictures.Net - Image Copyright © Bicot (Marc Cayal)

Farm Vehicles (Safe Access)



Private Crossings



Field Crossings

**Field Crossing w/o Active
Warning Devices**



**Field Crossing with Active
Devices**





**OPERATION
LIFESAVER®**

Illinois

Railroad Safety Outreach & Education



**OPERATION
LIFESAVER®**

Illinois

Additional Information

**Michael E. Stead
Rail Safety Program Administrator
Illinois Commerce Commission
527 E. Capitol Avenue
Springfield, IL 62701
(217) 557-1285
mstead@icc.illinois.gov**

EXPERIENCE IT YOURSELF.



Public Involvement



**ILLINOIS
HIGH-SPEED
RAIL**

CHICAGO TO ST. LOUIS



www.idothsr.org

Public Involvement

EXPERIENCE IT YOURSELF.



- » Visit www.idothsr.org
- **Crossing Closures**
 - **Event Calendars**
 - **Comment on Illinois High-Speed Rail Program**
 - **Sign up for Program e-mail notifications**



www.facebook.com/illinoishighspeedrail

1-855-IDOT-HSR (436-8477)

Business Opportunities

EXPERIENCE IT YOURSELF.

» **Visit the
Doing Business section
of www.idothsr.org**

- *Find details about the bidding process and current business opportunities*
- *Find related links for detailed procedures*



**ILLINOIS
HIGH-SPEED RAIL**
CHICAGO TO ST. LOUIS



www.idothsr.org

EXPERIENCE IT YOURSELF.

Questions?



**ILLINOIS
HIGH-SPEED
RAIL**

CHICAGO TO ST. LOUIS



www.idothsr.org

EXPERIENCE IT YOURSELF.

Thank you



**ILLINOIS
HIGH-SPEED
RAIL**

CHICAGO TO ST. LOUIS



www.idothsr.org